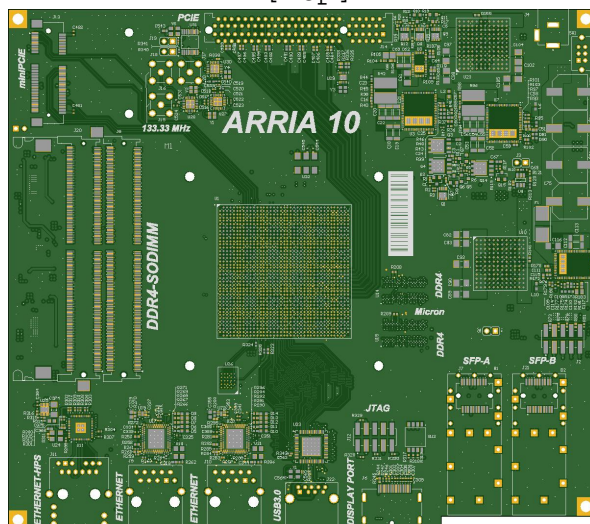
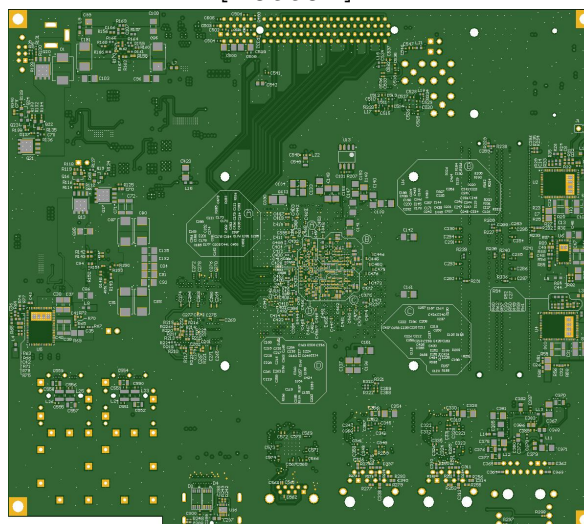


COMPARE_Check

[Top]



[Bottom]



DFM Summary (Bareboard):

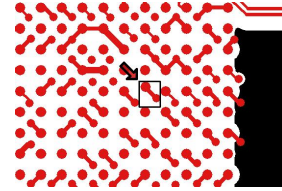
Level: MEDIUM (12)

Compare Jobs: 12 violation(s)

Compare Jobs - (DFM Level: MEDIUM)

Violation #: 1

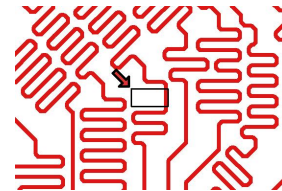
Job: pcb-NEW, Layer: 1_top, differs from Superimposed Job: pcb
Jobs differ at the given location and layers.
Location: 97.434, 65.786 (mm.)
Layer: 1_top



Compare Jobs - (DFM Level: MEDIUM)

Violation #: 2

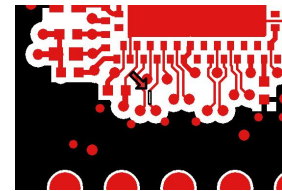
Job: pcb-NEW, Layer: 1_top, differs from Superimposed Job: pcb
Jobs differ at the given location and layers.
Location: 85.928, 40.386 (mm.)
Layer: 1_top



Compare Jobs - (DFM Level: MEDIUM)

Violation #: 3

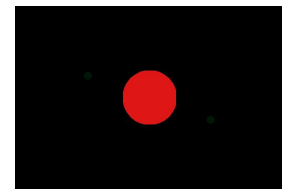
Job: pcb-NEW, Layer: 1_top, differs from Superimposed Job: pcb
Jobs differ at the given location and layers.
Location: 65.430, 21.285 (mm.)
Layer: 1_top



Compare Jobs - (DFM Level: MEDIUM)

Violation #: 4

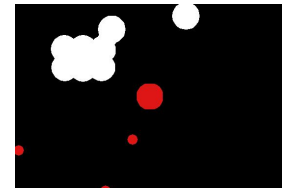
Job: pcb-NEW, Layer: 2_int1_gnd_, differs from Superimposed Job: pcb
Jobs differ at the given location and layers.
Location: 110.312, 48.819 (mm.)
Layer: 2_int1_gnd_



Compare Jobs - (DFM Level: MEDIUM)

Violation #: 5

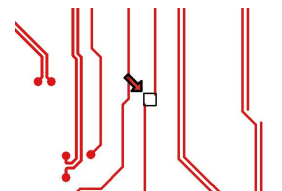
Job: pcb-NEW, Layer: 6_int5_power_, differs from Superimposed Job: pcb
Jobs differ at the given location and layers.
Location: 75.641, 50.698 (mm.)
Layer: 6_int5_power_



Compare Jobs - (DFM Level: MEDIUM)

Violation #: 6

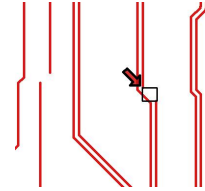
Job: pcb-NEW, Layer: 10_int9_sign_, differs from Superimposed Job: pcb
Jobs differ at the given location and layers.
Location: 79.375, 96.901 (mm.)
Layer: 10_int9_sign_



Compare Jobs - (DFM Level: MEDIUM)

Violation #: 7

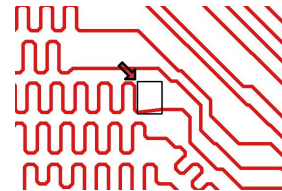
Job: pcb-NEW, Layer: 10_int9__sign_, differs from Superimposed Job: pcb
Jobs differ at the given location and layers.
Location: 84.049, 96.164 (mm.)
Layer: 10_int9__sign_



Compare Jobs - (DFM Level: MEDIUM)

Violation #: 8

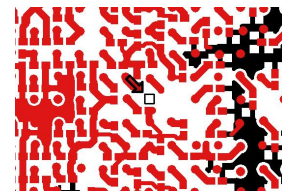
Job: pcb-NEW, Layer: 10_int9__sign_, differs from Superimposed Job: pcb
Jobs differ at the given location and layers.
Location: 54.712, 87.427 (mm.)
Layer: 10_int9__sign_



Compare Jobs - (DFM Level: MEDIUM)

Violation #: 9

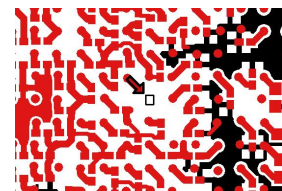
Job: pcb-NEW, Layer: 16_bottom, differs from Superimposed Job: pcb
Jobs differ at the given location and layers.
Location: 84.734, 76.454 (mm.)
Layer: 16_bottom



Compare Jobs - (DFM Level: MEDIUM)

Violation #: 10

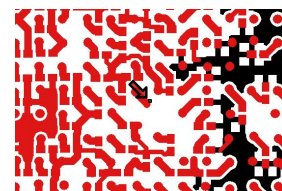
Job: pcb-NEW, Layer: 16_bottom, differs from Superimposed Job: pcb
Jobs differ at the given location and layers.
Location: 85.725, 76.403 (mm.)
Layer: 16_bottom



Compare Jobs - (DFM Level: MEDIUM)

Violation #: 11

Job: pcb-NEW, Layer: 16_bottom, differs from Superimposed Job: pcb
Jobs differ at the given location and layers.
Location: 85.344, 76.962 (mm.)
Layer: 16_bottom



Compare Jobs - (DFM Level: MEDIUM)

Violation #: 12

Job: pcb-NEW, Layer: 16_bottom, differs from Superimposed Job: pcb
Jobs differ at the given location and layers.
Location: 85.242, 76.733 (mm.)
Layer: 16_bottom

